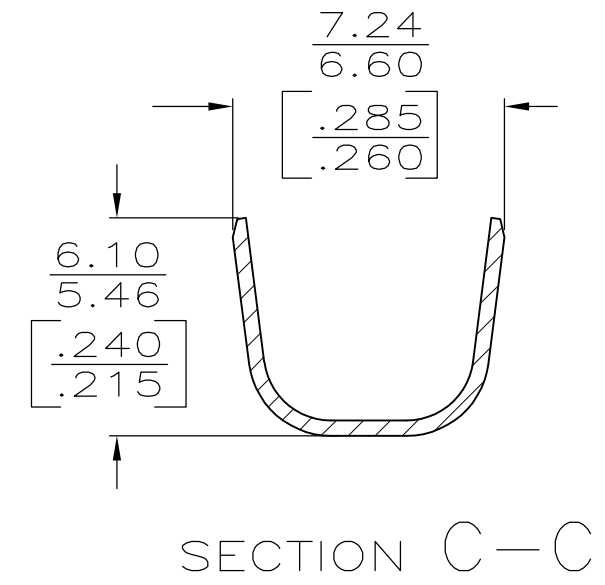
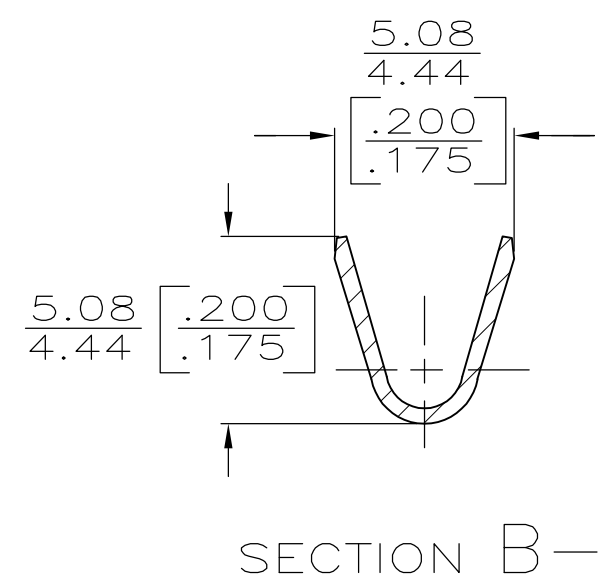
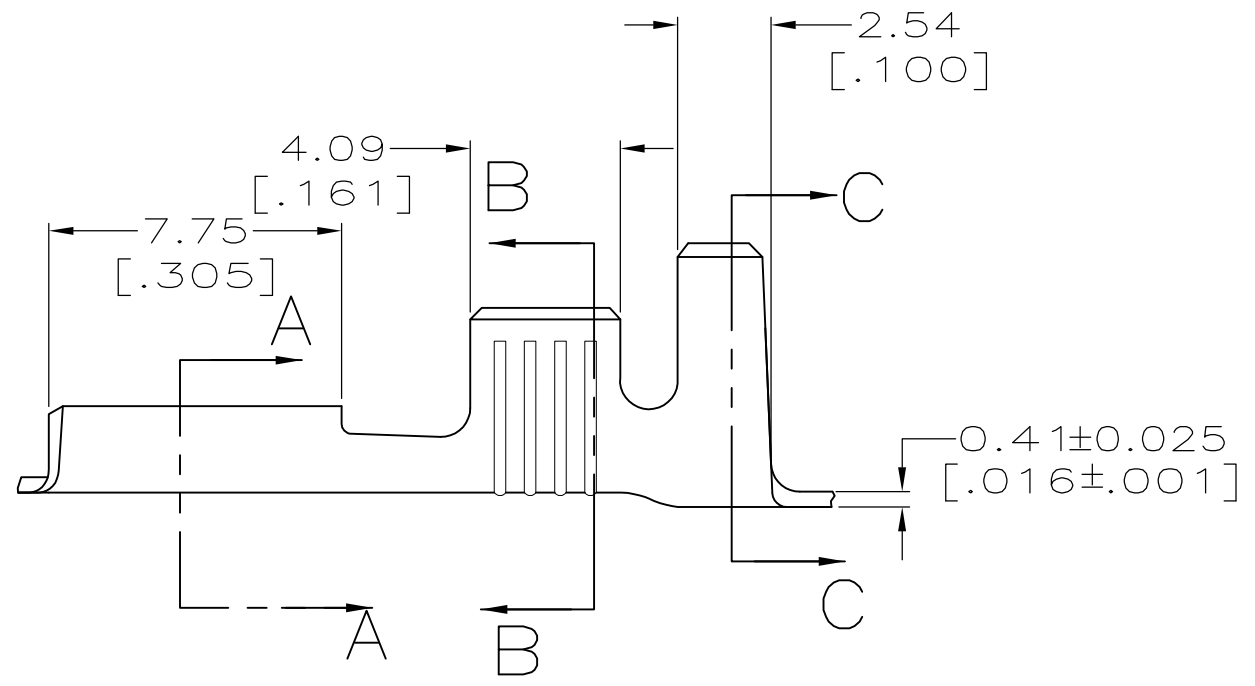
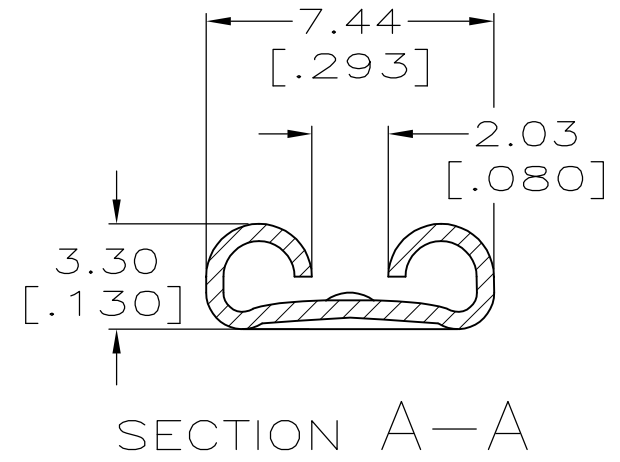
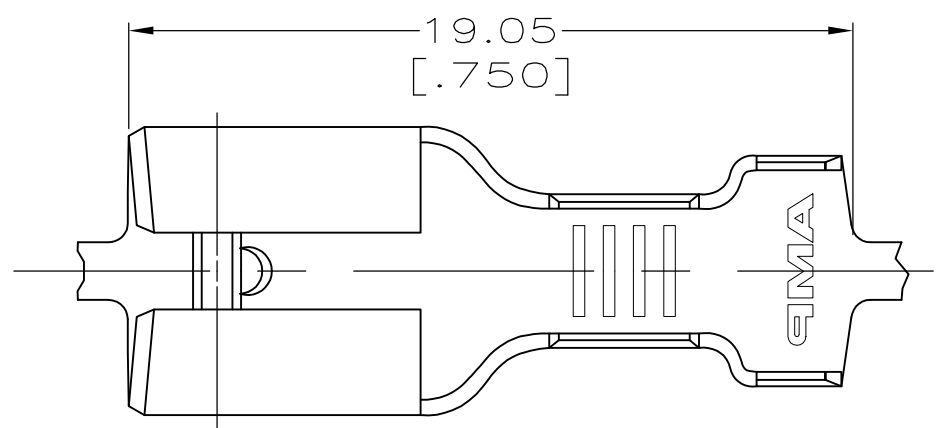


THIS DRAWING IS UNPUBLISHED. RELEASED FOR PUBLICATION
 © COPYRIGHT - By - ALL RIGHTS RESERVED.

LOC	DIST	REVISIONS			
P	LTR	DESCRIPTION	DATE	DWN	APVD
AF	50	C	REVISED PER ECR-12-013518	24NOV12	KH PD

- 1 CONTINUOUS STRIP ON REELS.
- 2 ACCEPTS WIRE SIZE [#16-#12 OR TWO #16'S].
- 3 INSULATION RANGE TO BE 4.06-5.33 [.160-.210] OR TWO 3.30 [.130] MAX DIA.
- 4 MATING TAB THK. TO BE 0.81±0.025 [.032±.001]
- 5 0.002032 [.000080] MIN TIN PLATE
- 6 PRELIMINARY - NOT FOR PRODUCTION.



5	6 63896-2
-	63896-1
Finish	Part Number

THIS DRAWING IS A CONTROLLED DOCUMENT.		DWN	JR RUTH	6/12/96	STE TE Connectivity		
DIMENSIONS: mm [INCHES]		CHK	MS FEHER	6/12/96			
TOLERANCES UNLESS OTHERWISE SPECIFIED:		APVD	J GILLESPIE	6/12/96	NAME		
0 PLC	± -	PRODUCT SPEC		RECEPTACLE, FASTON, 6.35 [.250] SERIES			
1 PLC	± -	APPLICATION SPEC		114-2036	SIZE	CAGE CODE	DRAWING NO
2 PLC	± 0.38 [.015]	MATERIAL		BRASS	114-2036	A300779	C-63896
3 PLC	± -	FINISH		SEE TABLE	RESTRICTED TO		
4 PLC	± -	CUSTOMER DRAWING		SCALE 5:1 SHEET 1 OF 1 REV C			
ANGLES	± -	WEIGHT		-			